

Meybohm

COMMERCIAL PROPERTIES

3519 WHEELER ROAD | AUGUSTA, GA | 30909

WWW.MEYBOHMCOMMERCIAL.COM



Riverwood Addison Square

5000 RIVERWOOD PARKWAY | EVANS, GA 30809

Addison Square is a mixed use Development at the Corner of Riverwood and William Few Parkway. Addison has 8 fee simple buildable pads with all utilities in place which are available for Sale. Parking will be available to all pads which will be governed and maintained by an association. The entire development will have over 140 parking places. The area is zoned for retail, professional and live/work units. Addison is designed as an area community center which will attract local businesses and tenants. Ideal tenants for Addison will be sit down restaurants, coffee shops, clothing stores, medical and specialty shops.

DEMOGRAPHICS	1 MILE	3 MILES	5 MILES
POPULATION	3,230	18,306	45,723
HOUSEHOLDS	1,060	6,002	16,155
% CHANGE (2010-2015)	23.1%	22.5%	17.3%
AVERGAE HHI	\$135,863	\$117,555	\$103,213

Addison Square is located in the heart of the Greenbrier area and adjacent to Riverwood Plantation at the Corner of William Few and Riverwood Plantation just off Washington Road.

DAVID HOGG, JR.

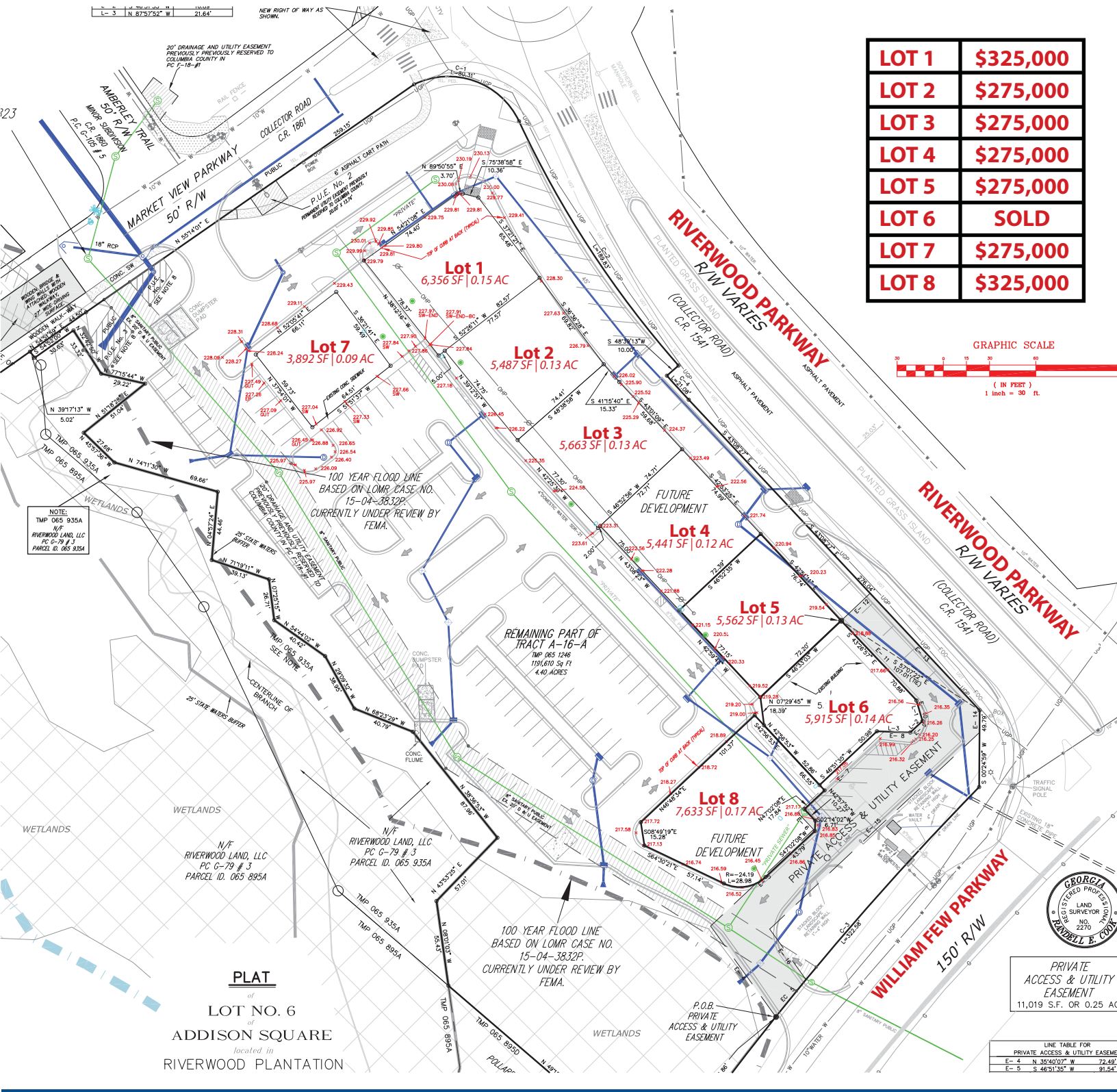
O: 706-736-0700 x2162 | C: 706-394-3011 | DHOGG@MEYBOHM.COM

Meybohm

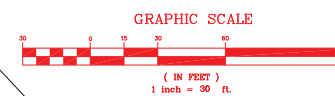
COMMERCIAL PROPERTIES

3519 WHEELER ROAD | AUGUSTA, GA | 30909

WWW.MEYBOHMCOMMERCIAL.COM



LOT 1	\$325,000
LOT 2	\$275,000
LOT 3	\$275,000
LOT 4	\$275,000
LOT 5	\$275,000
LOT 6	SOLD
LOT 7	\$275,000
LOT 8	\$325,000



PLAT
 of
LOT NO. 6
 of
ADDISON SQUARE
 located in
RIVERWOOD PLANTATION

DAVID HOGG, JR.

O: 706-736-0700 x2162 | C: 706-394-3011 | DHOGG@MEYBOHM.COM