

Meybohm

COMMERCIAL PROPERTIES

3519 Wheeler Road | Augusta, GA | 30909

www.meybohmcommercial.com

THE MARKET AT RIVERWOOD

EVANS, GEORGIA

The Market at Riverwood is a premiere retail shopping center with more than 13,500sf of lease space available and located in the heart of the Riverwood Town Center development. The center is anchored by Publix grocery store, with an additional 26,000sf of various retail uses. The Market also benefits from strong regional and national tenants such as CVS, McDonalds, Subway, Great Clips, Georgia Bank and Trust and Security Federal Bank.

Located at the corner of Washington Rd and William Few Pkwy, Riverwood Town Center is the gateway to the 3,800 acre master-planned community of Riverwood Plantation in Augusta, GA. Surrounded by neighborhoods nestled in true hometown tradition, Riverwood Town Center offers residents the comfort and convenience of the ideal neighborhood shopping center.



Demographics - 2015	1 Mile	3 Miles	5 Miles
Total Population	3,282	17,635	44,784
Total Households	1,067	5,714	15,600
Average Household Income	\$144,672	\$123,074	\$107,550

The Market at Riverwood is made up of 9 storefront units for lease with a minimum square footage of 1,200. Beside The Market Place is a separate 3,782 square foot building with wrap around drive thru for lease.

DAVID HOGG, JR.

706-736-0700 x2197
dhogg@meybohm.com

RYAN MARTIN

706-490-0409
rmartin@meybohm.com

Meybohm

COMMERCIAL PROPERTIES

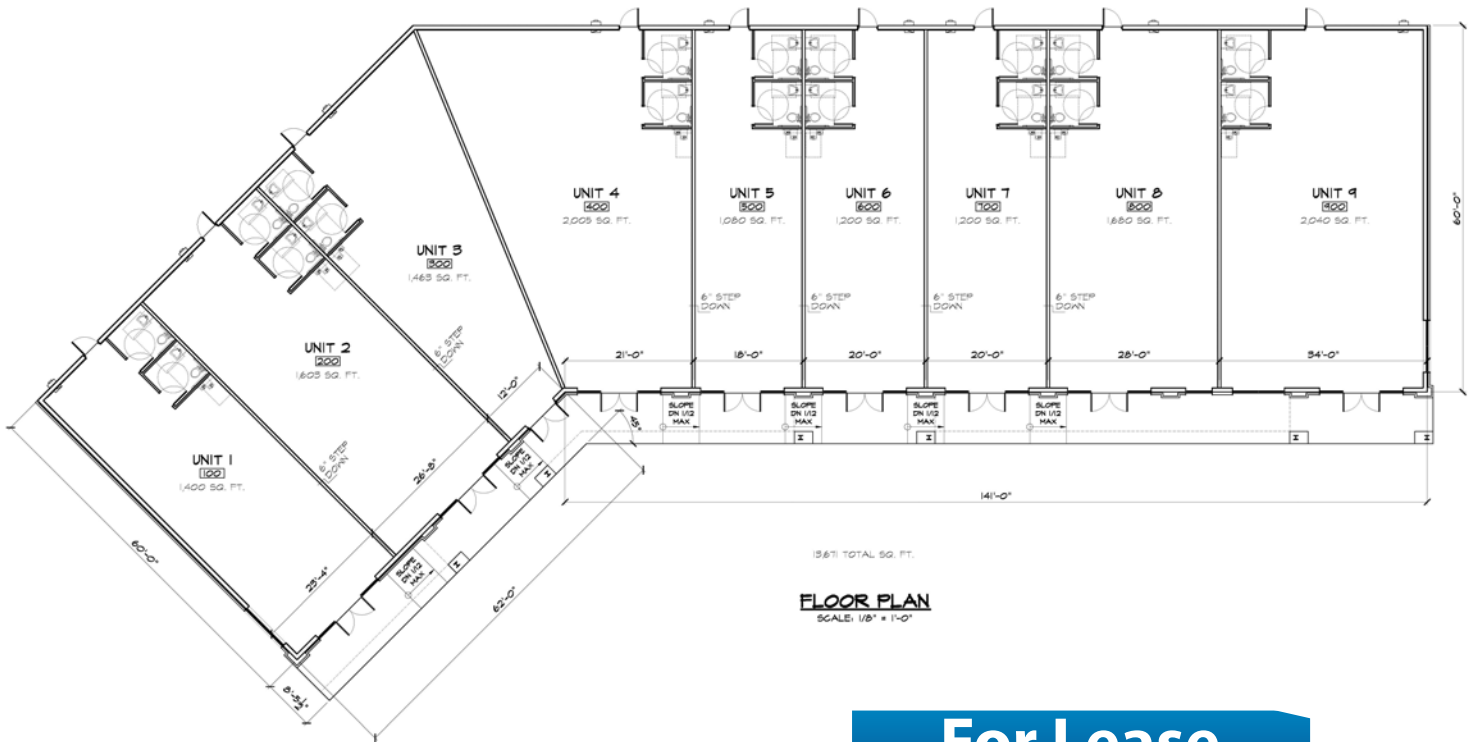
3519 Wheeler Road | Augusta, GA | 30909

www.meybohmcommercial.com



FRONT ELEVATION - BUILDING 'A'

2 "B"



For Lease



SUITES			
UNIT 1	1,400 Sq. Ft. LEASED	UNIT 6	1,200 Sq. Ft. AVAILABLE
UNIT 2	1,603 Sq. Ft. AVAILABLE	UNIT 7	1,200 Sq. Ft. LEASED
UNIT 3	1,465 Sq. Ft. AVAILABLE	UNIT 8	1,680 Sq. Ft. AVAILABLE
UNIT 4	2,005 Sq. Ft. LEASED	UNIT 9	2,040 Sq. Ft. AVAILABLE
UNIT 5	1,080 Sq. Ft. AVAILABLE	Building	3,782 Sq. Ft. with drive thru

DAVID HOGG, JR.

706-736-0700 x2197
dhogg@meybohm.com

RYAN MARTIN

706-736-0700 x2191
rmartin@meybohm.com