

THE PLAZA

at Evans Towne Center



MEYBOHM

BROKERAGE | DEVELOPMENT | MANAGEMENT

LEASING OPPORTUNITIES AVAILABLE

LIONEL PRATHER
MEYBOHM DEVELOPMENT GROUP

3519 WHEELER ROAD
AUGUSTA, GA 30909

P 706.736.0700
E LPRATHER@MEYBOHM.COM

ABOUT THE PLAZA AT EVANS TOWNE CENTER



The Plaza at Evans Towne Center is a public private venture between Columbia County and Meybohm Development Group. The Plaza is designed to be a walkable multi-use downtown in the heart of Columbia County. The Plaza will be anchored by a cultural arts center and is across from the Columbia County Court House, Library, and Lady Antebellum Park. The 22 acre site will include retail, professional and residential. The Plaza will be approximately 150,000 sqft including 60,000 sqft of professional space and nearly 75,000 sqft of retail space.

THE MEYBOHM BUILDING ELEVATIONS

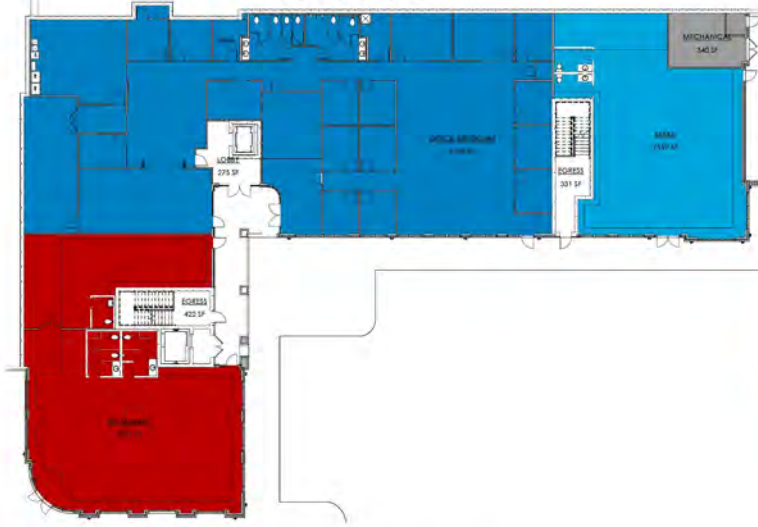
WEST
ELEVATION



REAR
ELEVATION

THE MEYBOHM BUILDING FLOOR PLANS

1ST FLOOR



2ND FLOOR



3RD FLOOR



4TH FLOOR



▶ LEASING OPPORTUNITIES AVAILABLE

1ST FLOOR

- 3771 sq. ft. available restaurant space
- 8260 sq. ft. Meybohm Building
- 2552 sq. ft. available retail space

2ND FLOOR

- 1929 sq. ft. available retail space
- 1638 sq. ft. available retail space
- 2251 sq. ft. available retail/fitness space
- 3474 sq. ft. available restaurant space
- 2209 sq. ft. available restaurant space
- 2400 sq. ft. available restaurant space

3RD FLOOR

- 7979 sq. ft. Meybohm Building
- 5489 sq. ft. available professional space

4TH FLOOR

- Rooftop Terrace
- 3929 sq. ft. event space
- 4200 sq. ft. available conditioned space

MEYBOHM

BROKERAGE | DEVELOPMENT | MANAGEMENT



Directions: From I-20 take Exit 194, right on S Belair Road, left on Washington Rd, right on Ronald Reagan Dr, right on Evans Towne Center Blvd.

THE PLAZA AT EVANS TOWNE CENTER DEMOGRAPHICS

	1 MILE	3 MILES	5 MILES
 Population 2015	5,784	50,005	106,079
 Population 2020	6,427	54,628	117,560
 Households	2,201	18,767	40,308
 Average Household Income	\$120,671	\$93,005	\$91,172